

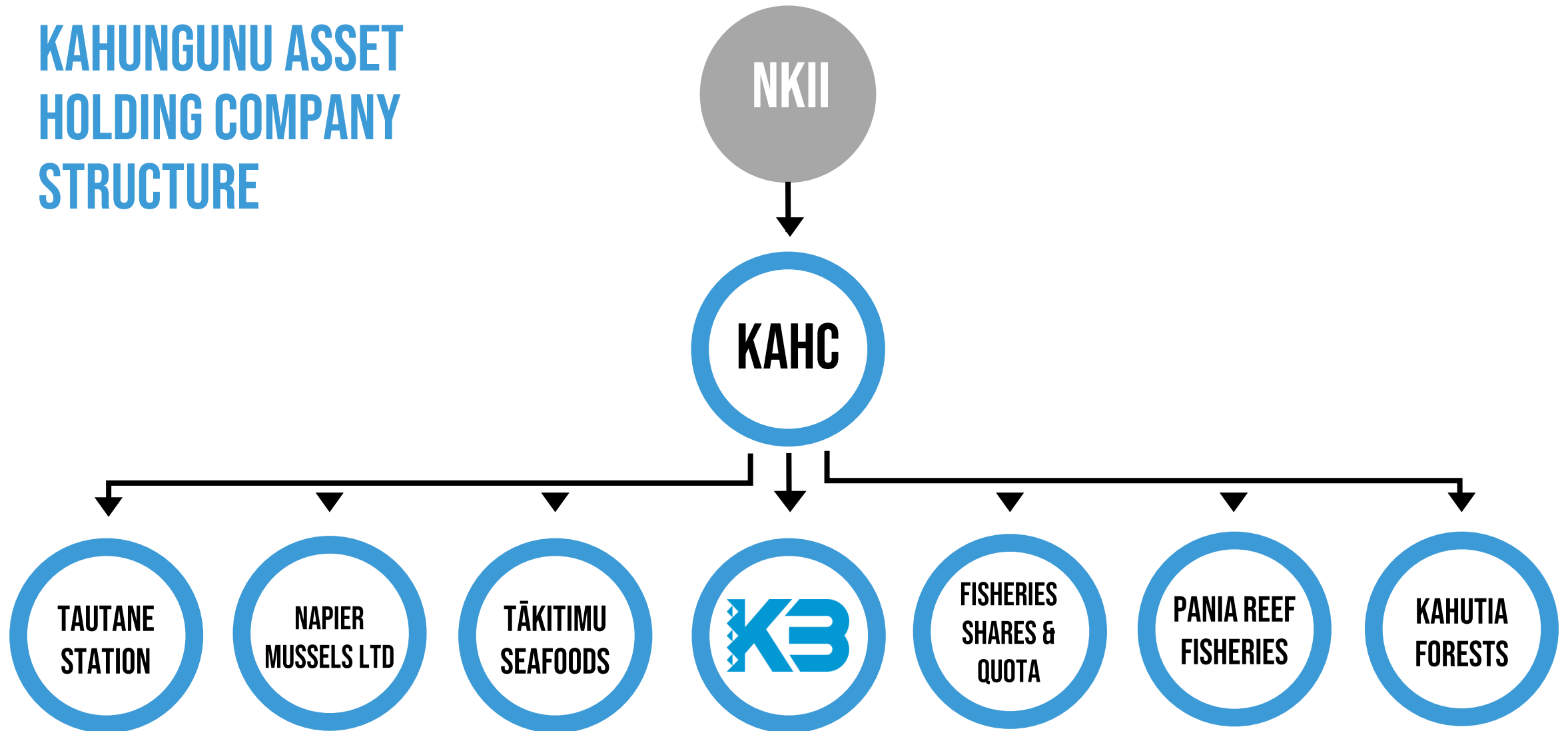


A KAHUNGUNU HOUSING MOVEMENT

TAKITIMU TUANUI



KAHUNGUNU ASSET HOLDING COMPANY STRUCTURE



WHY?



OPPORTUNITY



KB Pou



Whakapakari Tāngata **Growing People**

Pioneering customised training programmes to upskill and grow our people.



Whakatū Whare **Building Homes**

Building affordable and beautiful homes using innovative technologies and systems.



Whakatipu Rangatiratanga **Growing Māori Ownership**

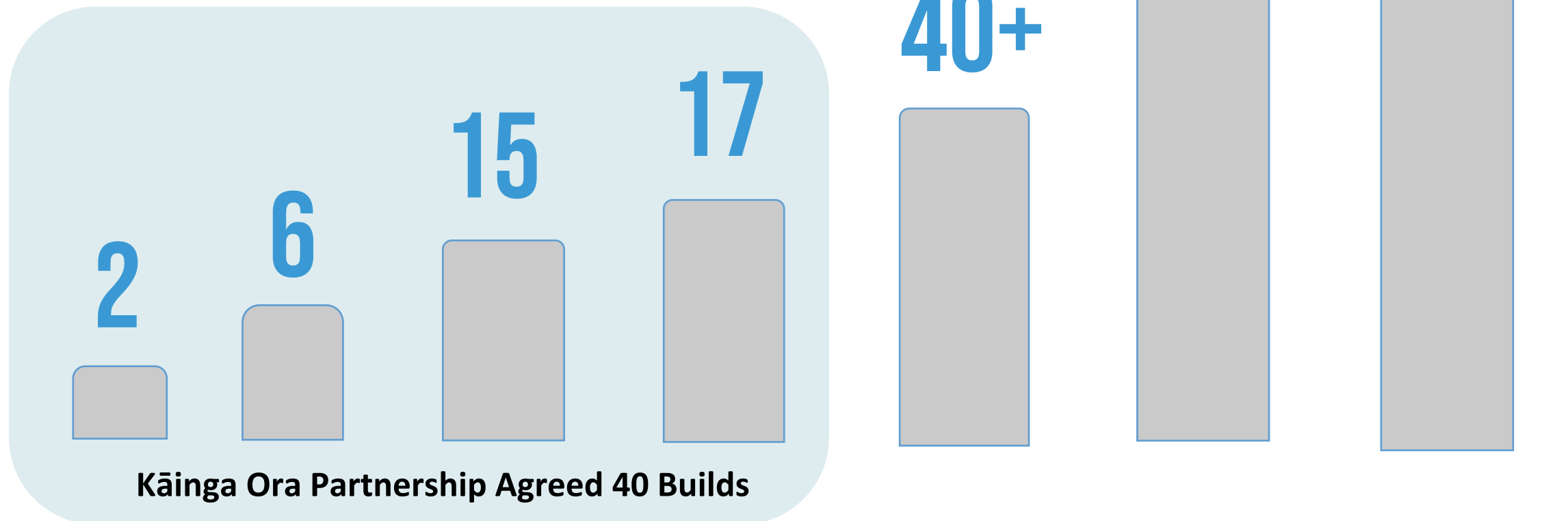
Creating and fostering Māori business opportunities resulting in positive change.



K3 Whakatū Whare Building Homes

- An Iwi led property development and construction company.
- Social outcomes intertwined with commercial construction activity.
- Multiple affordable home projects in the pipeline.
- Exploring innovative building methods, systems and materials.
- A desire to establish and facilitate quality home ownership and shared equity models for whanau.

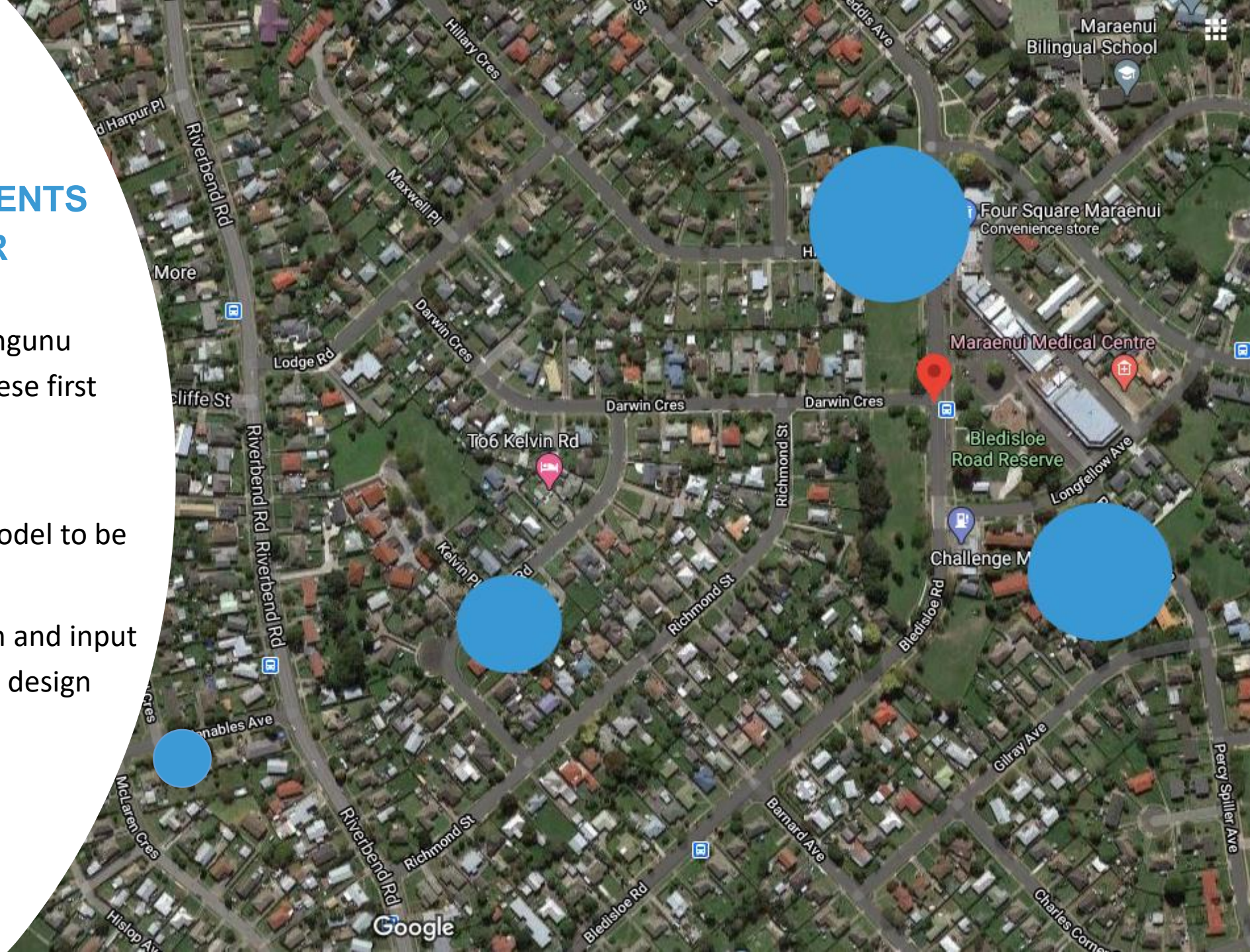
OUR BUILD PIPELINE





HOUSING DEVELOPMENTS IN MARAENUI, NAPIER

- Kainga Ora and Ngāti Kahungunu partnership approach to these first builds.
- New K3 Community consultation/connection model to be applied.
- Mana Whenua consultation and input into housing and landscape design inspiration.





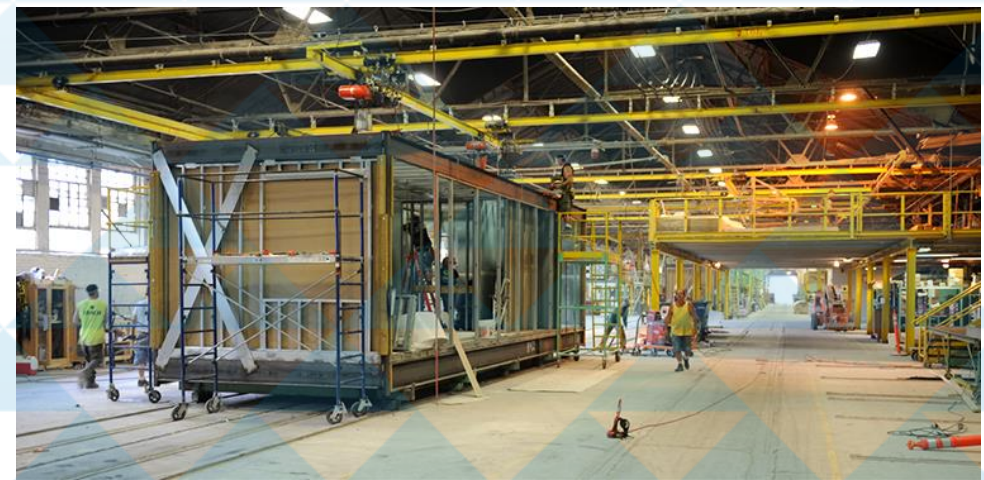
Kāinga ora State Homes Relocation and Refurbish programme





Tākitimu Housing Prefabrication

- Innovation
- Speed and economies of scale
- Increased unskilled labour opportunity
- Building capability and improving systems





WHAKATIPU RANGATIRATANGA
GROWING MAORI OWNERSHIP





Whakatipu Rangatiratanga **Growing Maori Ownership**

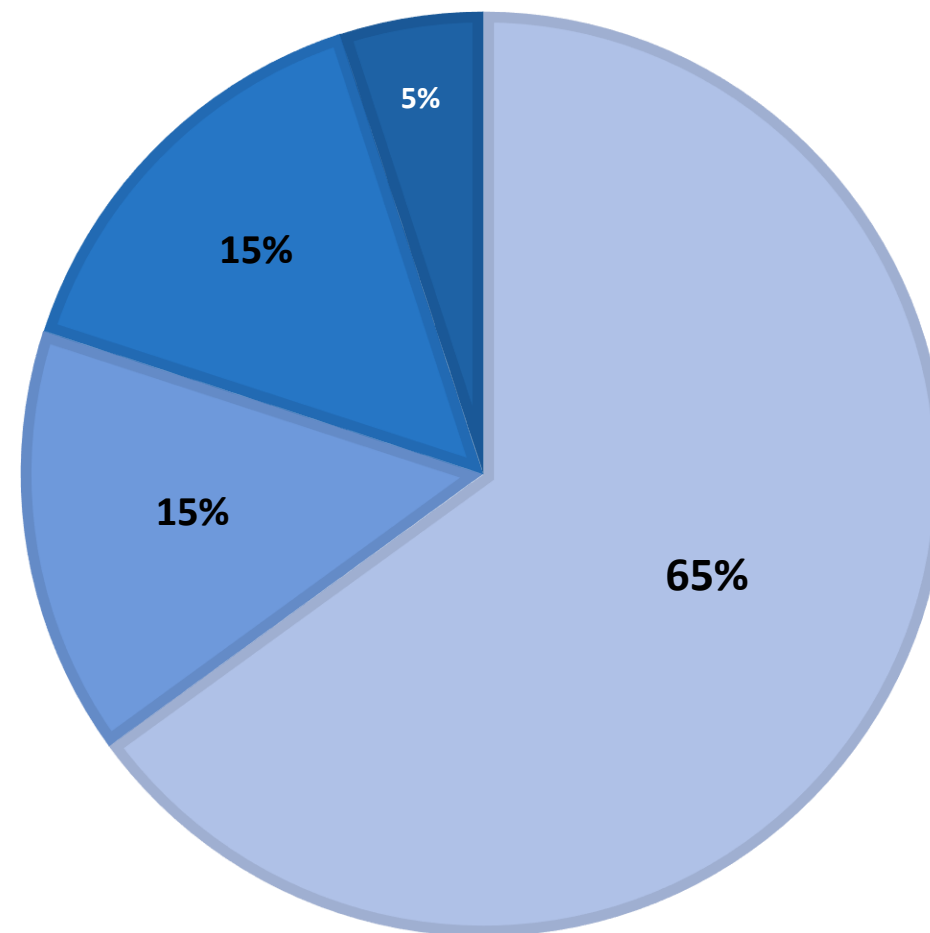
- MBIE support
- Administration and Marketing support for start ups. (branding, logo, websites)
- Business strategy support
- Building capability and improving systems



K3 Whakatipu Rangatiratanga Growing Maori Ownership

K3 TENDER/PROCUREMENT WEIGHTING MODEL

■ Price ■ Maori Business Ownership ■ Maori Apprentice Outcomes ■ Kaitiakitanga / H&S





WHAKAPAKARI TANGATA
GROWING PEOPLE



- 50 x Māori Apprenticeships
- All K3 Apprentices on the Living wage at minimum
- 25:1 Pastoral care support ratio
- Strong training partnerships
- Extra training workshops on Business skills, Life Skills, Tikanga and Reo



**WHAT DOES SUCCESS
LOOK LIKE?**









The background of the slide features a photograph of a building's wooden frame under construction. The structure is partially covered by blue metal scaffolding. A green horizontal beam with the text "BAY SCAFFOLDING" and a small icon is visible. The sky above is blue with some light clouds. A large, semi-transparent blue shape with a curved edge is positioned on the left side of the image, serving as a backdrop for the title text.

A KAHUNGUNU HOUSING MOVEMENT

Ngā mihi