

# What's on the horizon for housing policy and direction: Looking back and looking forward

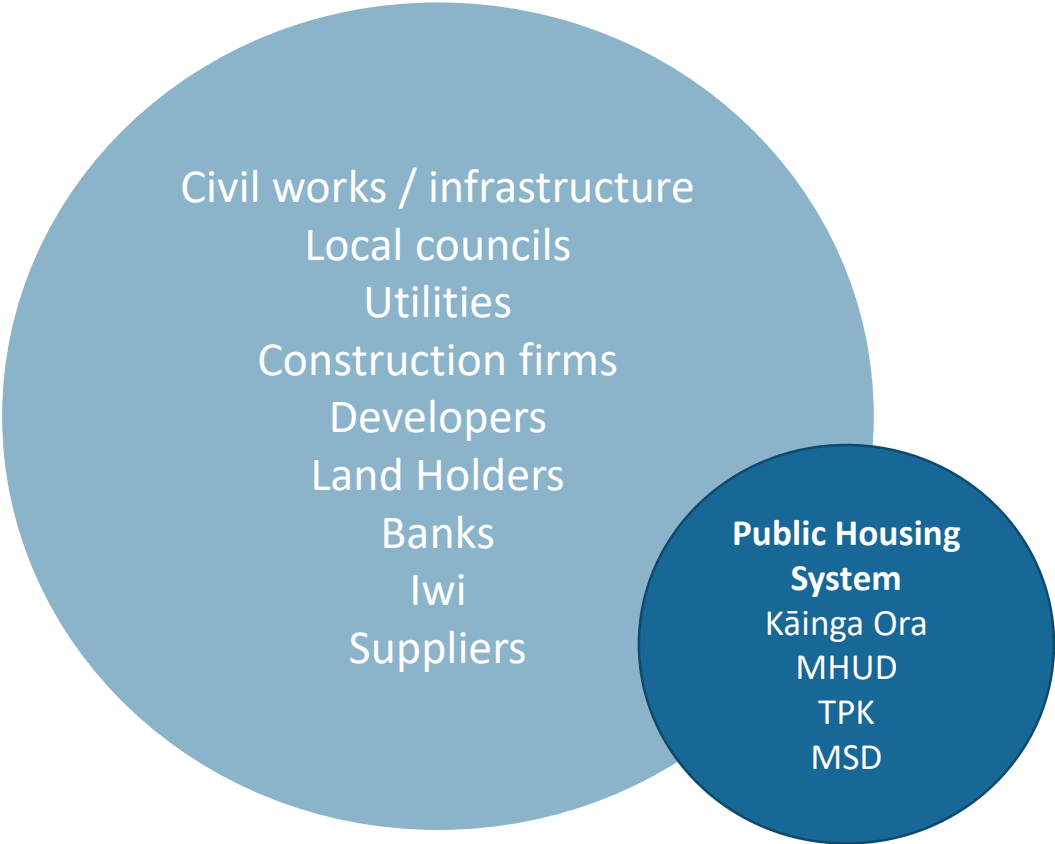
He Whare  
He Whānau  
He Whakatau



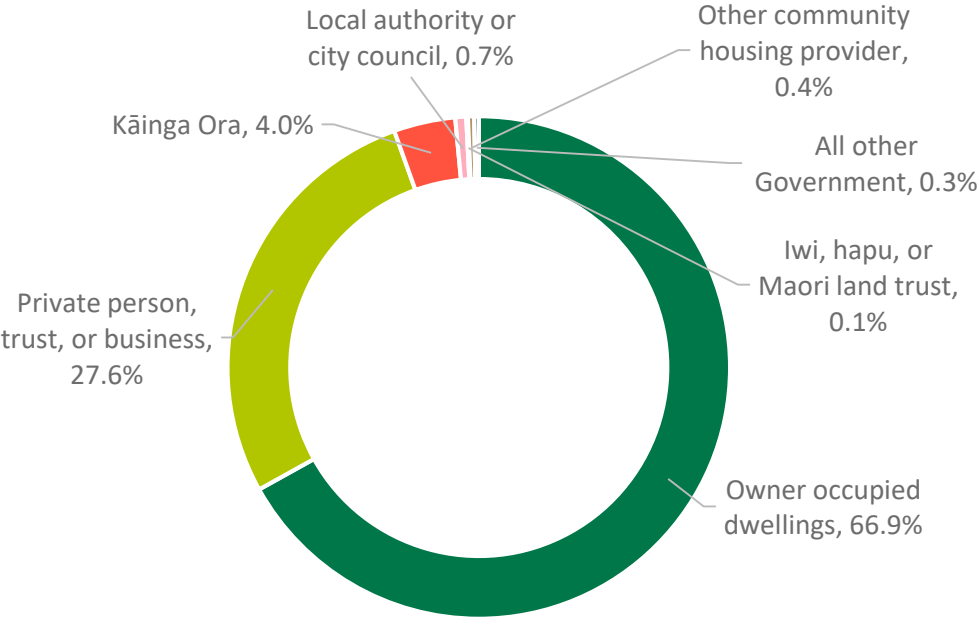
Enabling Whānau  
Housing Solutions



# The Housing System



## Breakdown of New Zealand's dwellings



Source: StatsNZ 2018 Census

# Improving New Zealand and New Zealander's lives

The impact Kāinga Ora has been asked to have on New Zealand and New Zealanders lives is far broader than our previous roles.

- Sustainable, inclusive and thriving communities that support good access to jobs, amenities and services
- Good quality affordable housing choices that meet diverse needs
- **Partnering with Māori ensures Māori interests are protected, their needs and aspirations are met and allows Kāinga Ora to fulfill its obligations in respect of Te Tiriti o Waitangi**
- Our public housing customers live well in their homes with dignity, stability, and the greatest degree of independence possible
- Environmental wellbeing is enhanced and preserved for future generations
- System transformation is catalysed and delivered.





## Lifting Kāinga Ora Capability

In order to deliver on our obligation to Māori we need to ensure that we are grounded in te ao Māori, recognising our heritage and obligations in how we operate.

This means that:

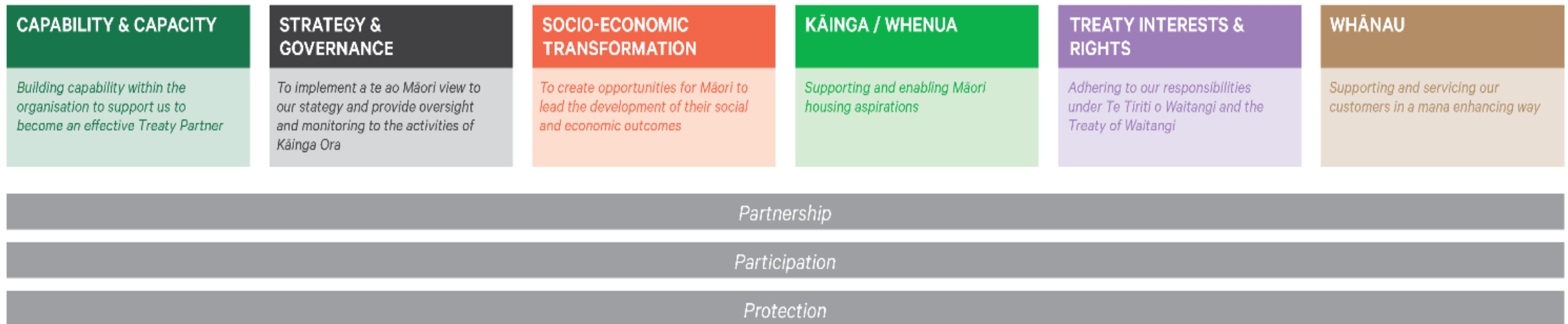
- We have the organisational capability to deliver on what is expected
- We have trust within the communities that we work
- Respect is at the focus of all the decisions we make
- Whānau are at the centre of decision making.



# Lifting Kāinga Ora Capability

We have reshaped the way that we work so that we can deliver on our obligations to Māori and developed Te Mahere, our framework to carry out this important mahi

## THE 6 POU WHICH UPHOLD OUR FRAMEWORK, AND THE 3 PRINCIPLES WHICH UNDERPIN THEM



# Lifting Kāinga Ora Capability

## Partnership Principles

- Mahi Tahi and Partnership
- Reciprocity and Ako
- Respect and Tikanga
- Trust and Manaakitanga
- Participation, Tino Rangatiratanga and Whakamana
- Active Protection and Tuku Iho
- Enable Redress and Te Whakatika Hapa

## Engagement Principles

- Respect and Tikanga
- Manaakitanga and Trust
- Participation and Tino Rangatiratanga
- Whakawhanaungatanga, Genuine and Meaningful Engagement
- Mōhioatanga and Early Communication
- Openness, Transparency and Māramatanga
- Whai Whakaaro, Responsive and Flexible

## Current Tools

- Underwriting land and home development projects
- Long-term lease arrangements
- Acquisition of land: within a development or project
- Providing access to project delivery expertise, including precinct land planning, construction innovation opportunities, and civils delivery and house building expertise
- Supporting the developer in working with Council's and other government agencies to understand infrastructure requirements and resolve timing, financing and funding matters
- Selling land that is surplus to Kāinga Ora's requirements, with development agreements.





# Working with, learning from and setting a path forward together

## Māori Framework

- Developing our Māori framework in partnership with Māori
- Using the expertise, knowledge and experience in the Māori housing sector to shape our Māori Framework
- Māori aspirations for housing and urban development are supported and Māori interests protected.





## Working with, learning from and setting a path forward together

Working in collaboration to delivering better services and outcomes for whānau

- **Hastings Place Based Housing Plan** - working in partnership to build new houses and papakāinga across Hastings
- **Ngāti Toa Transfer Project** - Renewal of housing stock across Porirua and strengthening Ngāti Toa's capacity in their rohe
- **Te Tihi Initiative** – working in partnership to deliver on home ownership opportunities.



Tēnā Koutou Katoa

He Whare  
He Whānau  
He Whakatau



Enabling Whānau  
Housing Solutions